

Board of Directors Meeting: January 20, 2021 – Public Comments

Date	Name	6. Public Comment on Non-Agenda Items
		None
Date	Name	7. Consent a. Approval of Monthly Financial Reports b. Accept Ridership Report – December 2020
1/18/2021	Mike Arnold	See attachment
Date	Name	8. Authorize the General Manager to Award Contract No. FN-PS-20-003 with Alliant Insurance Services, Inc. for Insurance Brokerage and Risk Management Consultation Services for a total contract amount of \$440,000 up to six years
		None
Date	Name	9. Review of 2020 Activities and 2021 Goals and Challenges <i>(Discussion/Provide Feedback)</i>
		None

Memo

To: SMART Board of Directors
SMART CFO, Heather McKillop

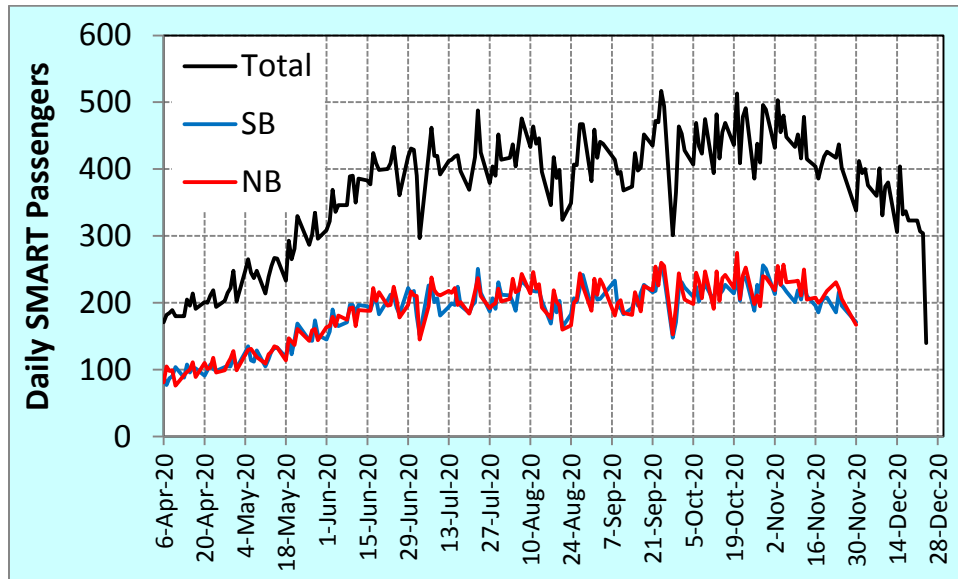
From: Mike Arnold

Date: January 17, 2020

Subject: Agenda Item 7B: Ridership Data in a More Communicative Format

I have offered the Excel spreadsheet that converts Joanne Parker’s posted spreadsheet reporting ridership by train and day to a readable table. Thus far, staff has not responded to the offer. Daily ridership tables in Excel format are available to anyone by request. Here I present summary ridership data.

Figure 1 -Total Ridership by Day and Direction



Source: Daily data for December was reported in the General Manager’s report. Data by train, which allows the calculation by direction, should be released following the Wednesday Board meeting.

Table 1
Average Ridership by Train from June 2020 through November 2020

SB		NB	
5:02AM	35.3	6:38AM	21.2
6:06AM	36.5	7:42AM	11.2
7:10AM	50.1	8:46AM	14.0
12:45PM	20.6	2:21PM	29.9
1:17PM	7.6	2:53PM	18.9
2:21PM	12.0	3:57PM	47.8
3:25PM	14.8	5:01PM	46.2
5:01PM	29.4	6:37PM	21.6

Source: Joanne Parker’s spreadsheet of ridership by train.

Ridership of SMART in Comparison to Other Bay Area Transit Systems
(in Thousands of Riders per Month and Ranked by 2019 Ridership)

Transit Agency	Avg. Riders Per Month		% Decline in Ridership
	2019	Jun-Nov 2020	
MUNI	18,272	4,357	-76.2
BART	10,633	1,345	-87.3
AC Transit	4,572	1,890	-58.7
VTA	3,021	953	-68.5
Caltrain	1,512	85	-94.4
SAMTRANS	956	362	-62.1
GGBHTD	464	62	-86.6
Central CC	301	100	-66.8
Marin	260	110	-57.5
Eastern CC	155	76	-50.9
Santa Rosa	154	62	-59.8
Livermore	151	34	-77.1
ACE	124	13	-89.3
Solano Co.	116	36	-68.5
Western CC	100	28	-71.7
Napa	88	26	-70.4
Sonoma Co	79	30	-62.3
Fairfield	76	22	-71.0
SMART	60	9	-85.1
Petaluma	29	11	-62.6

Source: National Transit Database. Please note that some agencies offer multiple transit “modes.” For example, GGHBDT provides bus and ferry services. MUNI provides multiple modes, including bus, cable car and street car services. Some smaller transit agencies are not required to report monthly ridership data to the NTD. June through November was picked because ridership March and April figures were more dramatically impacted by the early phase of the pandemic.

Ranking of Transit Agencies by Percentage Loss of Ridership

Transit Agency	% Decline in Ridership*
Caltrain	-94.4
ACE	-89.3
BART	-87.3
GGBHTD	-86.6
SMART	-85.1
Livermore	-77.1
MUNI	-76.2
Western CC	-71.7
Fairfield	-71.0
Napa	-70.4
Solano Co.	-68.5
VTA	-68.5
Central CC	-66.8
Petaluma	-62.6
Sonoma Co	-62.3
SAMTRANS	-62.1
Santa Rosa	-59.8
AC Transit	-58.7
Marin	-57.5
Eastern CC	-50.9

* Note: Same calculations as in prior table.