

# Special Giants Game Service June 1, 2022



# Giants Special Ferry Service

- Golden Gate Ferry runs special service directly from Larkspur to Oracle Park for Giants games
- Ferry crossing is 60 minutes



- Ferry leaves Larkspur 1 ½ hours before game time and departs Oracle ½ hour after the last out or end of event
- Tickets must be purchased in advance online and are \$15.50 per person one way

# SMART Service to Giants Ferry

- SMART receives many requests for service to the Giants ferry
- Weekend Giants games are 1:05pm, 4:15pm, or 7:15pm.
- The **variation** in length of baseball games requires the ferry and train to hold for an unknown period of time
- Current budgeted SMART staffing levels and labor contracts do not permit the train to hold for the return trips for the 4:15pm and 7:15pm games.
- **1:05pm game** return can be served by the addition of a special train, departing Larkspur at approximately 6:15pm (or 25 minutes after ferry arrival).
- **Dates:** Sunday, June 12<sup>th</sup> and Sunday, June 26<sup>th</sup>, 2022

# Giants Service Details

## Schedule

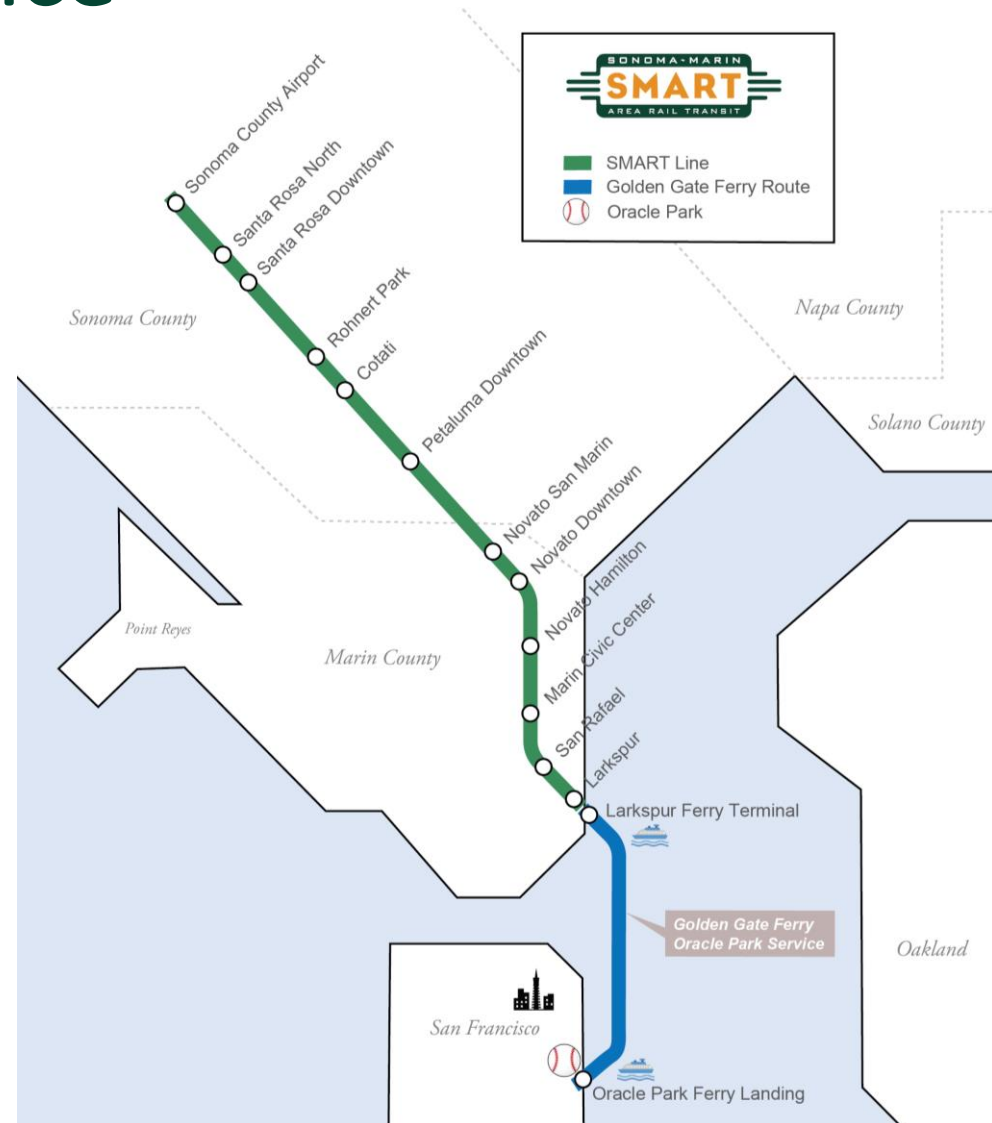
- **Southbound trip** – can be served with existing southbound 9:31am, getting to Larkspur at 10:50am; 45-minute transfer
- **Northbound trip** – departing Larkspur at approximately 6:15pm; overflow served by 7:30pm Northbound trip

## Ticketing

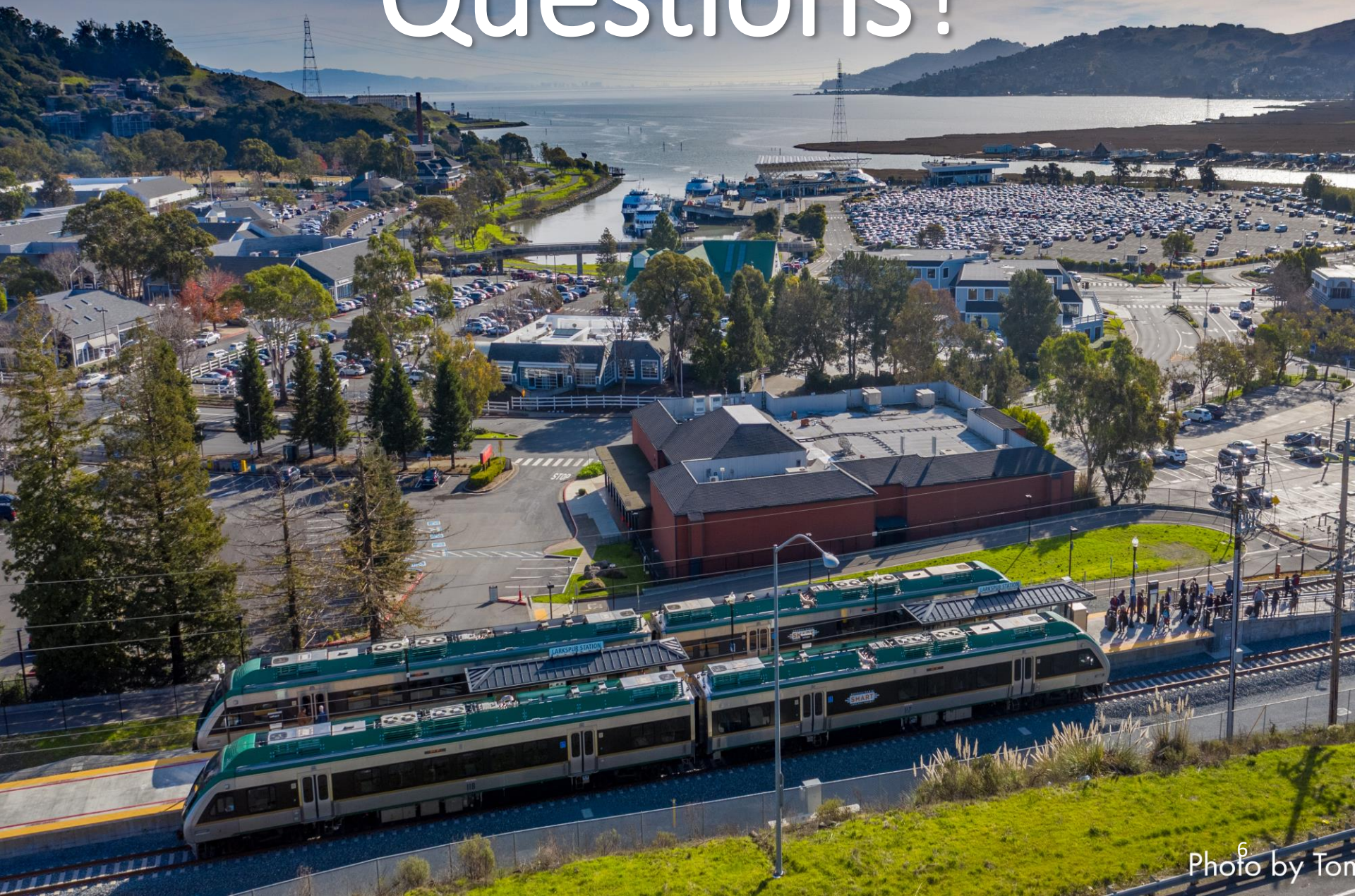
- Utilize **existing fare structure** for this pilot service
- Ticketing for the train and ferry would need to be purchased separately by the rider
- SMART riders should use the regular Clipper or Mobile App fares, as the “Rail and Sail” discount will not apply to the special Giants ferry service

# Door to Door Service

- Offers **coordinated service** to the public, to make traveling to Giants games more convenient and stress-free.
- **Door to Door service:** North Bay residents can travel car-free from their closest SMART station to the Marina Gate at Oracle Park, avoiding traffic and the hassle of parking.



# Questions?



# Connect with us:

[www.SonomaMarinTrain.org](http://www.SonomaMarinTrain.org)



## Customer Service:

[CustomerService@SonomaMarinTrain.org](mailto:CustomerService@SonomaMarinTrain.org)

(707) 794- 3330

