

General Manager's Report

May 18, 2022



Bill Gamlen



13 Year Anniversary!



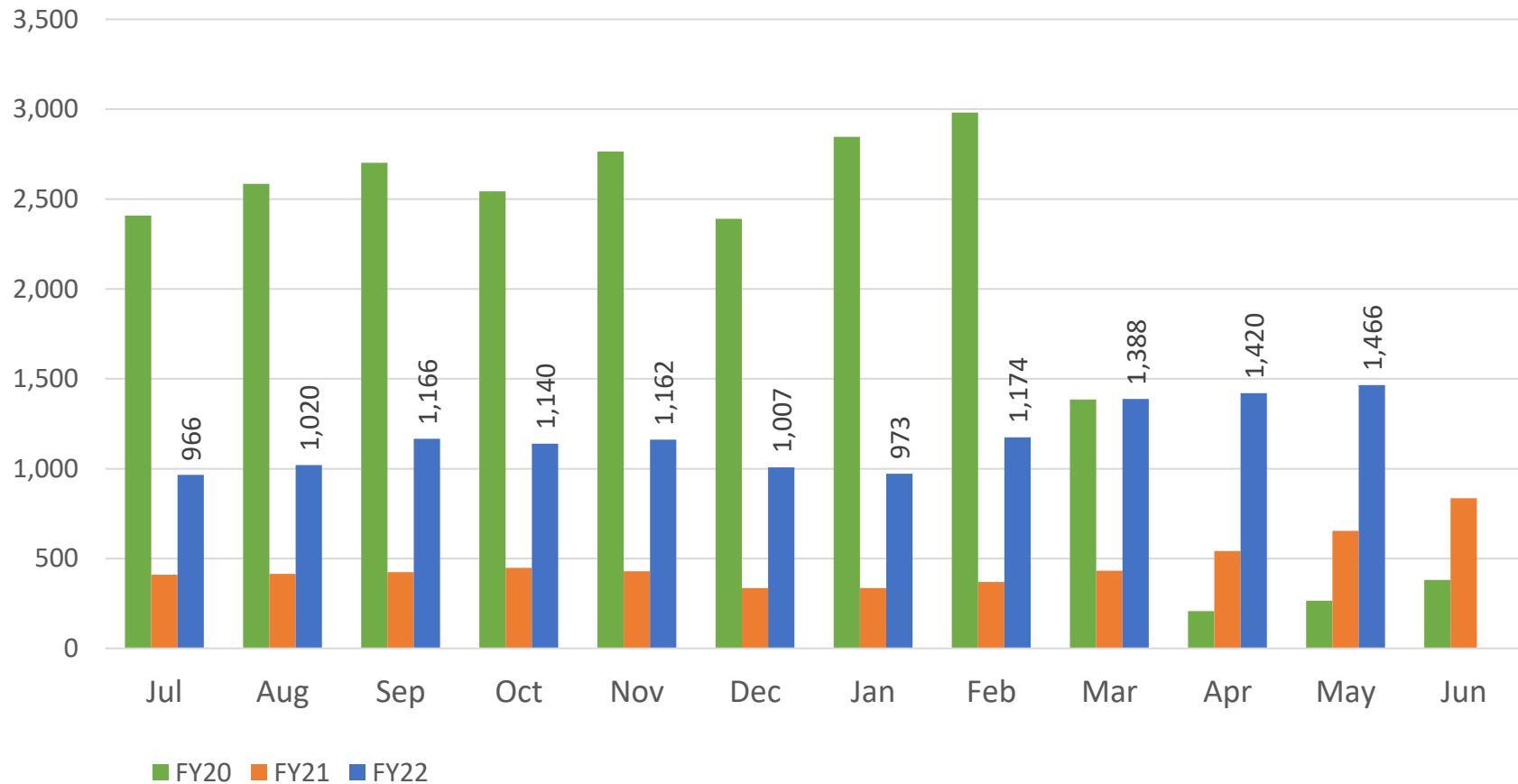
General Manager's Report

Updates

- Ridership
- Muir Woods Connection
- Community Outreach
- Freight Update
- Highlight of the Month

Questions

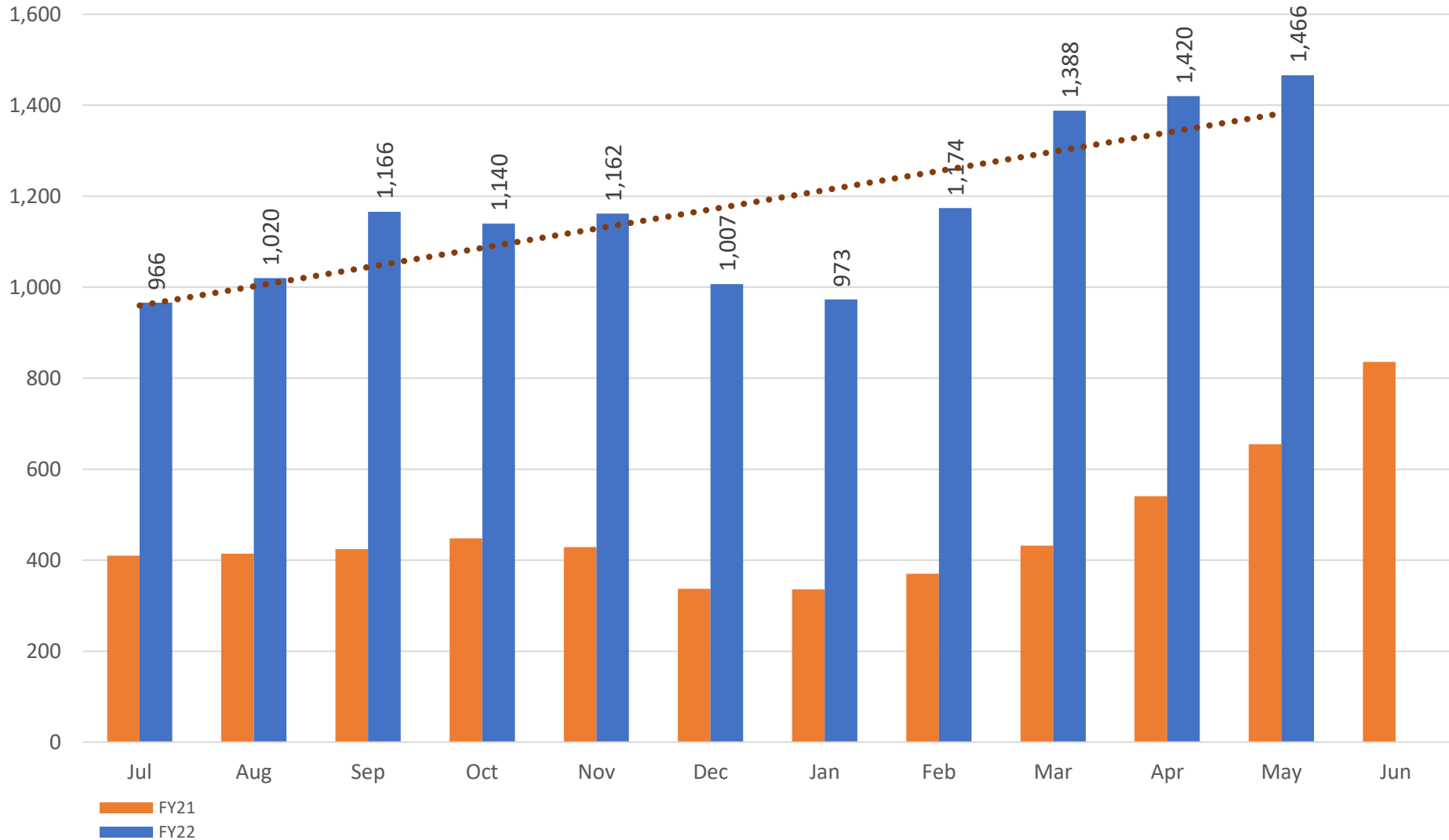
Average Weekday Ridership



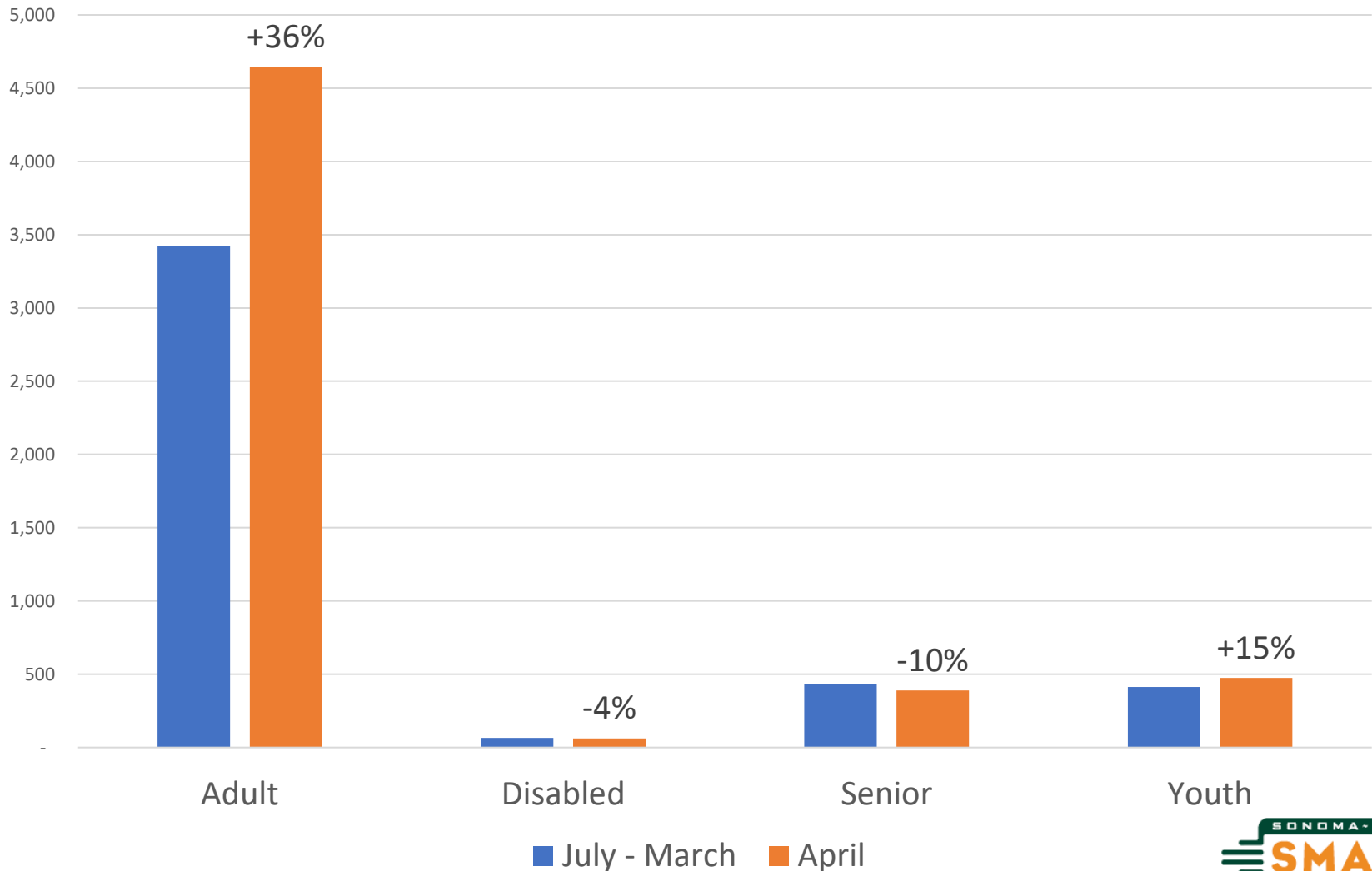
- Ridership last Thursday and yesterday highest to date post-Covid (1,608)
- Bike ridership last week highest post-Covid (1,551)
- MTD May ridership up 3% vs April (highest post-covid)



Average Weekday Ridership



Riders by Fare Type



Muir Woods Shuttle SMART Connection

- Marin Transit provides a Muir Woods Shuttle with NPS
- Resumed post-COVID service in June 2021 from the Pohono Park-and-Ride in Mill Valley
- Pickup location for this service will be moved to the Larkspur Ferry Terminal, tentatively starting June 4th
- North Bay residents & tourists will be able to take the SMART Train to Larkspur and visit Muir Woods



Community Outreach

Cloverdale Citrus Fair

- Shared information at booth
 - April 21-24
 - 500 Visitors
- SMART Employees
 - Matt Stevens
 - Ashley Remy
 - Amanda Lee
 - Joanne Parker
 - TiLiAnne Tanner
 - Veda Florez
 - Yasamin Mora Serrano
 - Dawn Knight
 - Jon Limon-Lopez
 - Glen George



Community Outreach



Petaluma Butter & Eggs Day

- Shared information at booth
 - April 23rd
 - 750 Visitors
- SMART Employees
 - Matt Stevens
 - Lisa Hansley
 - Patty Jackson
 - Heather McKillop
 - Aaron Parkes
 - Veda Florez



Community Outreach

Alto Street Canal Neighborhood Transportation Improvement Event (San Rafael)

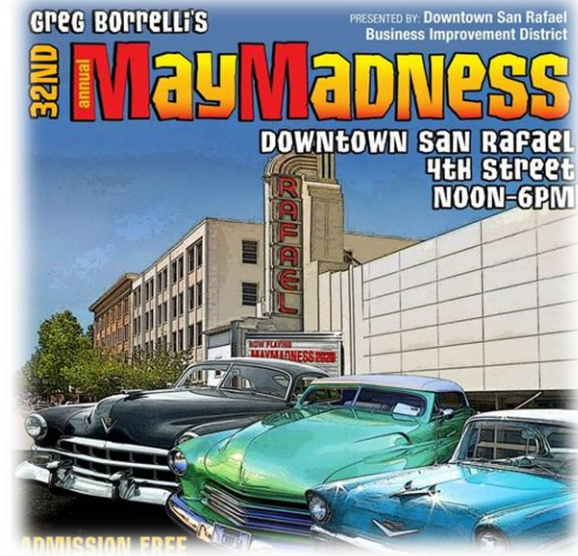
- Shared information at booth
 - April 23rd
 - 125 Visitors
- SMART Employee
 - Veda Florez



Community Outreach

May Madness Car Show

- Shared information
 - May 7th
 - 700 Visitors
- Participated in Car Show
- Presented “Best Tires & Wheels” Trophy
- SMART Employees
 - Veda Florez
 - Patty Jackson
 - Jon Limon-Lopez
 - Glenn George
 - Jeff Limon-Lopez



Community Outreach

Corte Madera Heritage Festival

- Shared information at booth
 - May 7th
 - 250 Visitors
- SMART Employee
 - Colleen Day-Flynn



Community Outreach



Mary Collins School Cherry Valley

- Field Trip to San Francisco
 - May 12, 2022
 - 50 Students
- SMART Employee
 - Veda Florez



Freight Update

SMART assumed freight operation on 3/1/22



- Four locomotives inspected/evaluated
 - One locomotive requires immediate engine work
 - Minor repairs and preventive maintenance required on two other locomotives
- Inspected all track equipment
 - Minor repairs and preventive maintenance underway
- Conducted Hi-Rail inspection on Brazos Branch
 - Track is in good shape
- Delivered 200 tons of ballast to repair track on Brazos Branch
 - Removed slow order at Brazos Junction Subdivision



Freight Update

- Inspected Brazos Branch bridges
 - Currently working on repairs
- Clean up has begun at Schellville yard
 - Removing scrap metal and debris
- Cleaned up transload site at Victory Station
 - Currently in talks with two lumber customers who inquired about shipping rates
- 77 of 89 LPG tankers shipped out
 - 12 remaining cars (moved by June 31st)
- Continue discussions with four potential new customers



Freight Update

Challenges

- Recruitment & hiring
 - Began recruitment January 31st for four Freight Utility Workers
 - Position requires diverse experience
 - Operating trains
 - Inspecting Track
 - Minor repairs and maintenance on locomotives and equipment
 - Took significant time to attract qualified applicants
 - Currently have four qualified applicants in background
 - Still need pre-employment physicals and testing
 - Appointments currently scheduled



Freight Update

Solutions

- Extend freight operation contract one month
 - Enable SMART additional time to hire, on-board, and train new employees
 - Original contract allowed for month-to-month extensions
 - Contract and budget amendment to be presented at June 1st meeting

Highlight of the Month (separate link)



Questions?

Connect with us:

www.SonomaMarinTrain.org



Customer Service:

CustomerService@SonomaMarinTrain.org

(707) 794- 3330

