



SMART

Your train has arrived.

Sonoma-Marín Area Rail Transit District

General Manager's Report – January 2020

5401 Old Redwood Highway, Suite 200
Petaluma, CA 94954
Tel: (707) 794-3330
Fax: (707) 794-3037
www.SonomaMarinTrain.org





Green Commute

#climatecrisis
#climateaction

Human-induced climate change and the catastrophic effects from global warming demand action at every level. Reducing greenhouse gas (GHG) emissions is an environmental and societal imperative and the reason why many cities in the North Bay have declared a Climate Emergency.

Transportation is the single biggest source of GHG emissions. By shifting to low carbon transportation modes, we can prevent millions of pounds of emissions annually. SMART is a **green commute** alternative to the one-person-in-one-car model of sitting in traffic idling on the Hwy 101 corridor, emitting tons of GHGs. The 1.72 million people who have ridden on SMART prevented 8.1 million pounds of CO2 emissions, compared to the same trip in a car.



8.1 million pounds CO2 prevented on SMART equal to 4,770 acres of forest carbon sequestration



SMART Runs Clean Diesel Trains

SMART's clean-diesel trains have modern, efficient engines that meet the EPA's Tier 4 emission standards, cutting particulate matter emissions by 96% and NOx emissions by 93% compared to regular diesel engines.

SMART riders have a lower carbon footprint

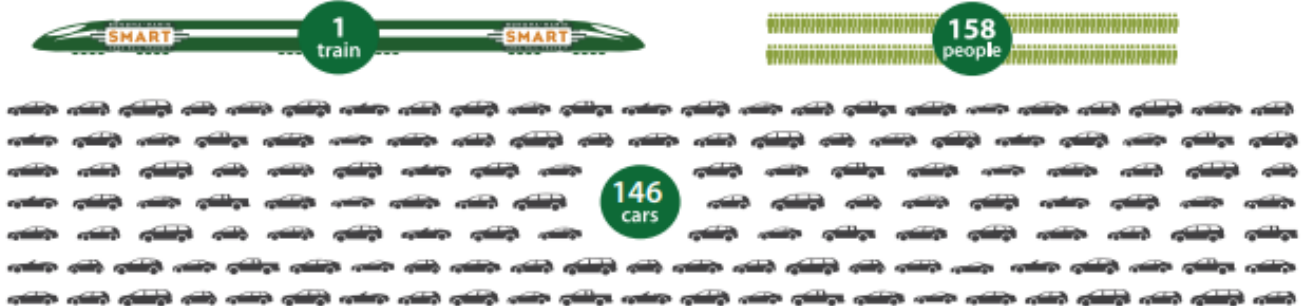
People who ride SMART emit 33% fewer CO2 per mile than if they drive.

And they get to and from the train using low emission forms of travel such as walking, biking and other types of public transit.

- 50% walk or take other public transit
- 14% ride a bicycle

SMART riders reduce traffic congestion

A SMART train carries 158 seated passengers. Cars during the commute carry an average of 1.08 passengers. This means that each SMART train can take 146 cars off the road, reducing traffic congestion and the number of cars idling in traffic. SMART's commuters free up 12.8 miles on roadways every weekday.





Green Commute

#climatecrisis
#climateaction

NORTH BAY GREEN PRIORITIES

- The Sonoma County Regional Climate Protection Authority and 8 of 10 Sonoma County jurisdictions have declared a Climate Emergency.
- Reducing emissions from transportation in the North Bay is a good way to address global climate change. Transportation is the #1 source of greenhouse gas emissions in the North Bay making up 53% of the total emissions.
- SMART provides a green choice for commuters and residents who need to travel the corridor for work or any other reason.
- SMART trains have modern, efficient engines that meet the EPA's Tier 4 emissions standards, cutting Particulate Matter (PM) emissions by 96% and nitrogen (NOx) emissions by 93% over regular diesel engines. And, in the future, as train technology improves, so will SMART's.

SMART IS THE GREENER CHOICE

- Choosing a trip on SMART means emitting 33% less CO2 per passenger mile than driving.
- Car commuting in Sonoma and Marin generates 0.5937 pounds of CO2 emissions per passenger mile while traveling on SMART generates 0.3991 pounds of CO2 emissions per passenger mile*.
- If SMART's 1.72 million riders had driven their cars to their destination, they would have emitted 8.1 million more pounds of CO2 into the environment.
- SMART riders also choose low emission methods for their first and last mile connections to or from the train. 50% walked, bicycled or took public transit and 14% of riders carry bikes onboard the train.
- In addition to emitting less CO2 per passenger mile, SMART trains carry more people and take up less space than cars, which frees up space on our roads and freeways.
 - Average car length is 14 feet, plus an additional one car length of buffer, totaling 28 feet per car.
 - SMART's average weekday ridership is currently 2,600. If these passengers drove, with an average of 1.08* people per car, there would be 2,407 additional cars on the road, consuming over 12.8 miles of roadway.

CAR vs. TRAIN EMISSIONS



Car Commuting - North Bay car commuters average fewer than 1.08* people per car. California Air Resources Board Emission FACTor (EMFAC) emissions model says that in Sonoma County vehicles emitted an average of 0.6412 pounds per mile driven for 2017-2019 vehicles.

$$0.6412 \div 1.08 = 0.5937 \text{ pounds CO}_2 \text{ per passenger mile}$$



SMART Commuting - SMART has consumed 735,868 total gallons of fuel, including ALL fuel consumed for passenger service and rail systems testing. The US EPA says that 22.44 pounds of CO2 emitted per gallon of diesel can be expected.

$$22.44 \times 735,868 = 16,512,878 \text{ pounds CO}_2$$

SMART has carried 1.72 million riders traveling an average of 24 miles per trip on SMART, not including first/last mile trips.

$$1.72 \text{ M passengers} \times 24 \text{ miles} = 41.38 \text{ M passenger miles traveled}$$

$$16,512,878 \text{ pounds CO}_2 \div 41.38 \text{ M passenger miles} = 0.3991 \text{ pounds CO}_2 \text{ per passenger mile}$$

Car Travel Emissions	
1,724,088 people	
x 24 miles	
x 0.5937 pounds	
24,566,185 pounds of CO2	

SMART Travel Emissions	
1,724,088 people	
x 24 miles	
x 0.3991 pounds	
16,514,005 pounds of CO2	

That's a difference
of 8,052,180
pounds of CO2!



*American Community Survey 2013-2017 and California Air Resources Board EMISSION FACTor 2017, 2018, 2019 Sonoma County data





Progress Report

Return on Investment



SMART successfully matched local sales tax dollars by securing an additional \$323 million in federal, state, and regional grant funding. This amounts to a 110% return on investment for North Bay residents and millions of tax dollars coming back to the North Bay. 182 businesses in Marin and Sonoma counties benefited from \$93 million worth of contract services with SMART.

\$323 M in Grants

\$289 M in Sales Tax



Stations



SMART promised to build a regional transit system connecting the North Bay, providing an alternative to Hwy 101 for commuters.

SMART has 12 stations connecting North Bay cities, providing access to places of employment, schools, and centers of commerce, as well as connecting riders to other regional transit services. Construction of the railway's extension to Windsor is underway and stations are planned for North Petaluma, Healdsburg, and Cloverdale.



Bicycle Pathway



SMART promised to develop a bicycle pathway network.

SMART and its partners have built 24 miles of pathway and an additional 8.8 miles are fully funded and planned for construction. This investment in bicycle and pedestrian facilities connects people to other pathways and to train stations, providing opportunities for multi-modal commuting and recreation.



Connecting Cities

SMART promised a modern passenger rail system connecting cities in the North Bay and to San Francisco via ferry.

SMART serves over 80% of the population of Marin and Sonoma counties, providing access to passenger rail service that connects North Bay residents to major centers of employment and commerce, while also providing a sustainable and climate friendly transportation alternative to Hwy 101. Construction of the railway's extension to Windsor is underway, and extensions to Healdsburg and Cloverdale are planned.



Service Schedule



SMART promised service with trains running every 30 minutes during peak commute times, and service on weekends.

During peak commute hours SMART has a train arriving every 32 minutes. On weekends, trains operate earlier in the day and align with the ferry schedule to allow for leisure and recreational trips to and from San Francisco as well as within Marin and Sonoma counties.



Climate Friendly



SMART promised to construct a modern, comfortable and environmentally sustainable alternative to driving.

SMART's trains cut emissions of particulate matter by 96% and nitrogen by 93% over regular diesel engines.

A trip on SMART emits 33% less CO2 per passenger mile than a trip in a car.

SMART preserved 56 acres of wetlands in Marin and Sonoma with the Mira Monte project, protecting endangered species while also mitigating railway construction environmental impacts.



COMMUNITY OUTREACH

Community Outreach | Presentations and Community Events

The SMART train has become a very popular field trip for school groups of all ages. The new connection at Larkspur is a gateway to the Bay Area for many groups. Teachers have started using the train to teach kids about public transportation, travel within the community, and even physics and motion! The Community Outreach team is available to help you coordinate a group trip, including navigating schedules, fares and connections. Send an email to info@SonomaMarinTrain.org to start planning your trip.

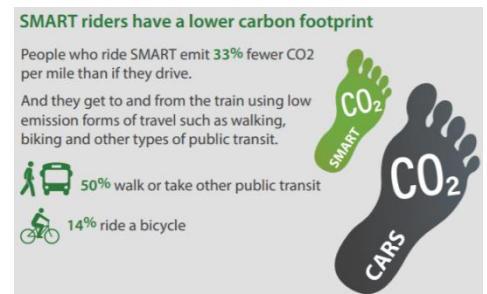
Since the last SMART Board meeting, outreach staff has participated in the following community events and presentations:

- January 31 | Petaluma Rotary Club (Petaluma)
- February 2 | Congregation Shomrei Torah (Santa Rosa)
- February 4 | Rotary Club of Rohnert Park/Cotati (Rohnert Park)
- February 5 | Sebastopol Rotary Club (Sebastopol)

Community Outreach | SMART's Green Commuters

Following a request by our Board of Directors to study the agency's impact on greenhouse gas (GHG) emissions, SMART released a Green Commute fact sheet detailing GHG emissions and the positive impact SMART riders have on the environment. Transportation is the single biggest source of GHG emissions. SMART is a green commute alternative to the one-person-in-one-car model of sitting in traffic idling on the Hwy 101 corridor, emitting tons of GHGs. SMART riders have reduced CO2 emissions by 33%, compared to having completed the same trip in a car.

View the Green Commute Fact Sheet at <http://sonomamarintrain.org/node/366>.



SMART riders have been reducing their carbon footprint and opting for low emission forms of travel to connect to and from the train, such as walking, biking, and other forms of public transit.

MARKETING

Marketing Programs | Promotional Fare Programs

Sail & Rail Combo Ticket

For a flat rate of \$12, riders can purchase a one-way combo ticket for travel on the Larkspur ferry and train. The ticket is available on SMART's mobile e-ticket app. Riders can now connect to San Francisco for much less than the cost of gas, bridge tolls and parking fees. The new combo ticket is ideal for travel during non-commute hours and for leisure trips.



The Sail & Rail combo ticket may be used anytime on Weekends and Holidays. On weekdays, the combo ticket is available for any SMART train and during the following times for ferry trips:

- Weekdays southbound departing Larkspur by ferry any time after 8:20 AM
- Weekdays northbound departing San Francisco any time before 3:30 PM

The Weekender Pass



Winter weekends and holidays are full of fun possibilities with free transfers between the ferry and the train during January and February, 2020. In celebration of the new Larkspur station, SMART and Golden Gate Transit are offering free transfers between the two services on weekends and holidays. With the purchase of a ferry ticket heading north into Larkspur, riders can get a Weekender Pass that is good for a free trip on the SMART train. Similarly, with purchase of a train fare heading south into Larkspur, riders can receive a Weekender Pass good for a free Ferry trip into San Francisco.

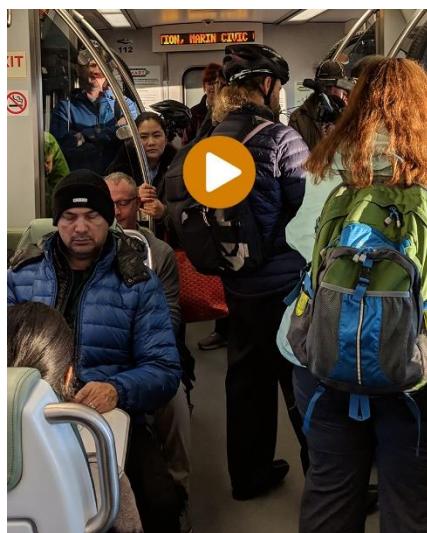
Marketing Programs | SMART Advertising

SMART's advertising program continues to grow and reach new audiences. Advertisers have eagerly been awaiting the addition of the two new stations, with space already sold through the entire year.

Digital Programs | Social Media and Website

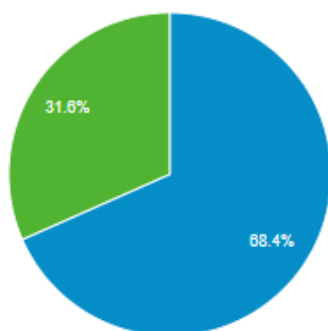
SMART's social media following has been rapidly growing after the grand opening of the Larkspur and Novato Downtown stations. The most popular posts have been promotions for the new fare programs, with notable organic and paid reach and engagement.

SMART has also been giving our riders a spotlight on social media with special video posts. Our green commuters and riders value climate-friendly transportation options, and we want to share their reasons to ride. Check out our Facebook page to find out why people are choosing to ditch the car and #GoGreen with SMART.



What are your reasons to ride? Find more videos on [SMART's Facebook page](#).

■ New Visitor ■ Returning Visitor



Visitor traffic to SMART's website has increased substantially since the launch of the new full-service schedule on January 1, 2020. Through the month of January, there were over 80,000 sessions and over 43,000 total users. The schedules page receives the most website traffic, with one quarter of all page views.

Media | News Coverage

- January 27, *As California's homeless people camp out on railroad tracks, train-related deaths are rising* (Los Angeles Times)
- January 26, *Healdsburg second-guessing planned event center, future farmers market home in favor of housing* (Santa Rosa Press Democrat)
- January 26, *SMART tax opponents' poll show measure failing* (Marin Independent Journal)
- January 26, *San Rafael Transit Center relocation narrowed to 3 options* (Marin Independent Journal)
- January 24, *Easier commute, higher home price? How better transit options impacts 3 hot neighborhoods* (San Francisco Chronicle)
- January 25, *Program expanded for Lyft rides to Sonoma-Marin rail stations* (Novato Patch)
- January 22, *BikeLink accepting Clipper cards at certain locations* (KNTV/NBC Channel 11)
- January 22, *Campaigns feud over spending by committee opposing SMART's sales tax renewal* (Santa Rosa Press Democrat)
- January 21, *Dick Spotswood: SMART train tax opposition brings the big bucks* (Marin Independent Journal)
- January 18, *SMART tax opposition raises \$559k from Sonoma executive* (Marin Independent Journal)
- January 18, *Supporters, opponents make their case in SMART train tax extension* (Marin Independent Journal)
- January 17, *Opponents of SMART train tax receive big donation* (KSRO Radio 1350)
- January 17, *Study: SMART riders reduce GHG emissions* (Progressive Railroading)
- January 16, *Green Commute Sonoma-Marin Area Rail Transit* (Sonoma County Gazette)
- January 16, *Battle heats up in North Bay over proposed tax extension for SMART train* (San Francisco Chronicle)
- January 16, *Gallaher Homes executive spends \$500,000 to derail SMART sales tax citing broken promises* (Santa Rosa Press Democrat)
- January 16, *PD Editorial: SMART is coming* (The Windsor Times)
- January 10, *PD Editorial: SMART's self-inflicted wounds* (Santa Rosa Press Democrat)
- January 10, *SMART launches an expanded service schedule* (The Community Voice)
- January 9, *Agency notes gains in Sonoma-Marin commuter train ridership while contesting overall dip in second year* (North Bay Business Journal)
- January 8, *Editorial: SMART's aggregate data is not helpful in determining true ridership numbers* (Marin Independent Journal)
- January 6, *SMART board calls for more detailed ridership data* (Marin Independent Journal)



- January 8, *SMART board highlights gains in commuter ridership while contesting overall dip in second year* (Santa Rosa Press Democrat)
- January 8, *Close to Home: What SMART's data does and doesn't say* (Santa Rosa Press Democrat)
- January 8, *SMART unveiling ridership data at public meeting* (Petaluma Argus Courier)
- January 7, *SMART unveils ridership data in public forum in push for sales-tax extension* (Santa Rosa Press Democrat)
- January 6, *Marin Voice: only way to hold SMART accountable is to vote against tax in March* (Marin Independent Journal)
- January 4, *Dick Spotswood: a dig into the SMART ridership numbers reveals interesting trends* (Marin Independent Journal)
- January 3, *SMART sees ridership drop in second year, new data shows* (Marin Independent Journal)
- January 3, *SMART ridership declined in 2nd year, but weekday use growing, newly obtained records show* (Santa Rosa Press Democrat)
- December 31, *SMART launches new train schedule, expanded service for 2020* (Novato Patch)
- December 28, *Marin's top news stories of 2019* (Marin Independent Journal)
- December 26, *Kinkadee fire, PG&E shut-offs among news stories in Sonoma County* (Santa Rosa Press Democrat)
- December 24, *Marin coroner names Novato man hit by SMART train* (Marin Independent Journal)
- December 24, *Man struck by SMART train identified* (KSRO radio 1350)
- December 23, *Novato man, 71, identified as pedestrian fatally struck by SMART train* (Santa Rosa Press Democrat)
- December 21, *Dick Spotswood: Expect a big Marin turnout for March election* (Marin Independent Journal)
- December 21, *71-year-old Novato man was struck by SMART train in Thursday night* (SF Gate)
- December 19, *Man, 71, killed by SMART train in Novato* (Santa Rosa Press Democrat)
- December 19, *Pedestrian struck by SMART train in Novato, condition unknown* (San Francisco Chronicle)
- December 19, *Pedestrian struck by SMART train in Novato* (KPIX/CBS Channel 5)
- December 18, *Editorial: SMART needs to release ridership number* (Marin Independent Journal)

CAPITAL PROJECTS

WINDSOR EXTENSION PROJECT

- Design work is underway.
- Tree removal started in January.
- Geotechnical boring for structural design is complete.
- Coordination with the Town of Windsor and Sonoma County is on-going.
- Environmental permitting is underway.



MULTI USE PATHWAY PROJECTS

- I. West Robles Ave. to Bellevue Ave. in Santa Rosa
 - SMART is finalizing design
 - Construction is planned for Spring 2020

- II. Southpoint St. in Petaluma to Main St. in Penngrove
 - Design is planned to begin in fall 2020
 - Construction start in summer 2021

- III. Golf Course Dr. in Rohnert Park to West Robles Ave. in Santa Rosa
 - Design is planned to begin in fall 2020
 - Construction start in summer 2021



REAL ESTATE

PROPERTY ACQUISITIONS (IN PROCESS)

Downtown Petaluma Station Property: Staff continues to work with the proposed purchaser of the property on a final Purchase and Sale Agreement. Part of the agreement includes working the Union Pacific Railroad on determining the location of a fiber optics easement. The developer has submitted a preferred location for the fiber optics line which Union Pacific needs to approve. Staff is continuing to work with the proposed buyer to finalize details of the property sale.

Downtown Santa Rosa Station Property: At the December 4, 2019 board meeting, the board approved the General Manager signing a Deed of Trust that SMART held on the adjacent property which will remove an encumbrance.

Larkspur Extension Project: San Rafael City Council approved the Land Exchange Agreement with SMART at their October 16th, 2019 meeting. The SMART Board approved the Land Exchange Agreement on January 8th, 2020 meeting. Staff is working to have the documents fully executed and recorded. Staff continues to work with Century Theatres on an agreed upon access route to the Non-Motorized pathway to access the new Larkspur Station.

Pathway: Coordinating with the adjacent property owners and local municipalities regarding securing any necessary land rights to accommodate the construction of the pathways and interim access and laydown area needs. Working with City of San Rafael on the Multi-Use Pathway Lighting System project from Rice Drive to Second Street.

PROPERTY MANAGEMENT

Special Events Completed:

Runner's Club Relay Race - Tamalpa Runner's Club – February 2, 2020

Special Event Requests:

Windsor Run & Wine Half Marathon Race – Fit for Equality – May 17, 2020

Right of Entry Permits Issued:

Buckler Family Vineyards LLC – Adobe Road Winery utility connection – Petaluma

City of Petaluma/ Pat Nelson Construction – Water Pipeline Work – Petaluma

PG&E – Gas Line Work – Airport Road, Healdsburg

PG&E – Gas Line Work – Fremont Drive, Schellville - Sonoma



Staff is continuing working on issuing Right of Entry Permits/License with:

Caltrans – Highway 101 Petaluma

City of San Rafael – MUP lighting – San Rafael

PG&E – Gas Line Work – Front Street, Healdsburg

PG&E – Gas Line Work – Olive Street, Novato

PG&E – Gas Line Work – Harbor Drive, Novato

Marin County Flood Control – Installation of 3 pumps – Hwy 37

ATT- 8th Street Crossing Santa Rosa

PG&E – Flagging for Pipeline work- Silveria Pkwy, San Rafael

West Coast Solar Company – Solar Project – Lagunitas Brewing – Petaluma

Sonic – Numerous Access Permits issued for work on fiber optics lines.

Metro-MCI – request to connect to Sonic fiber line

COMCAST – Staff is still working to finalize outstanding license agreement fees. Fiber Optic installation verifications in 7 locations. Agreements to be revised.

.



OPERATIONS

MAINTENANCE OF WAY:

- Staff completed ultrasonic rail flaw testing for defects on all passenger routes with our contract vendor between Larkspur and Airport Boulevard.
- Staff completed the pre-emergent application portion of our Vegetation Management Program along the rail corridor between San Rafael and Airport Boulevard.
- Completed a successful inspection by FRA Signal and Train Control Inspector. He spent 2 days on inspecting SMART's grade crossing automatic warning devices and train control systems.
- Facilities team completed the maintenance takeover of the Cal Park Tunnel and pathway from Marin County Parks with the receipt of as-built plans and changing all locks to SMART locks.
- Interviews were conducted with 1 Signal Tech applicant who was selected to move forward in the hiring process.
- The Signal Maintenance team began FRA required 2-year interlocking testing in January. The Track Maintenance team working in conjunction

VEHICLE MAINTENANCE:

- Performed fly wheel change out on Diesel Multiple Units 110, 107 and 118. This is an engine modification, that is caused by the fatigue level of the metal being low
- Performed mid-year maintenance on 2 Diesel Multiple Units
- Performed 500-hour oil change on 13 Diesel Multiple Units
- Automatic Train Control maintenance performed on 8 Diesel Multiple Units. This maintenance keeps us compliant with Federal Regulatory Association regulations in regards to positive train control
- Performed 5 random emergency window pulls on a number of different Diesel Multiple Units. This task is performed to ensure gaskets and windows are in compliance and will operate properly in case of an emergency
- Nippon Sharyo and Cummins have completed all Field Modifications to the SMART engines, a campaign that started June of 2019. This campaign provided upgrades to parts found to fail prematurely at other facilities as well as gave SMART an opportunity to complete 10,000-hour overhauls of the engines as part of regularly scheduled preventative maintenance

TRANSPORTATION:

SMART Transportation Department Training: Currently up-dating E-Path online training for year 2020.

HUMAN RESOURCES

CURRENT OPEN RECRUITMENTS:

- Signal Technician
- Rail Information Systems Specialist
- Assistant Engineer – Rail Systems
- Vehicle Maintenance Supervisor
- Vehicle Maintenance Technician
- Administrative Assistant

INTERVIEWS:

- Assistant Engineer – Rail Systems
- Vehicle Maintenance Technician
- Signal Technician
- Community Outreach Coordinator
- Chief of Police
- Code Compliance Officer

MISCELLANEOUS:

On Friday, January 24, 2020 members of the Sonoma Corps Steering Committee from Piner High School, Sonoma County Office of Education and the Career Technical Education Foundation met with SMART staff at the Rail Operations Center to plan for the student visit that will take place on February 20th. SMART will host 13 students participating in the Sonoma Corps program to introduce them to the different technical careers available in rail.

GRANTS, LEGISLATION, PLANNING AND REGIONAL ACTIVITIES

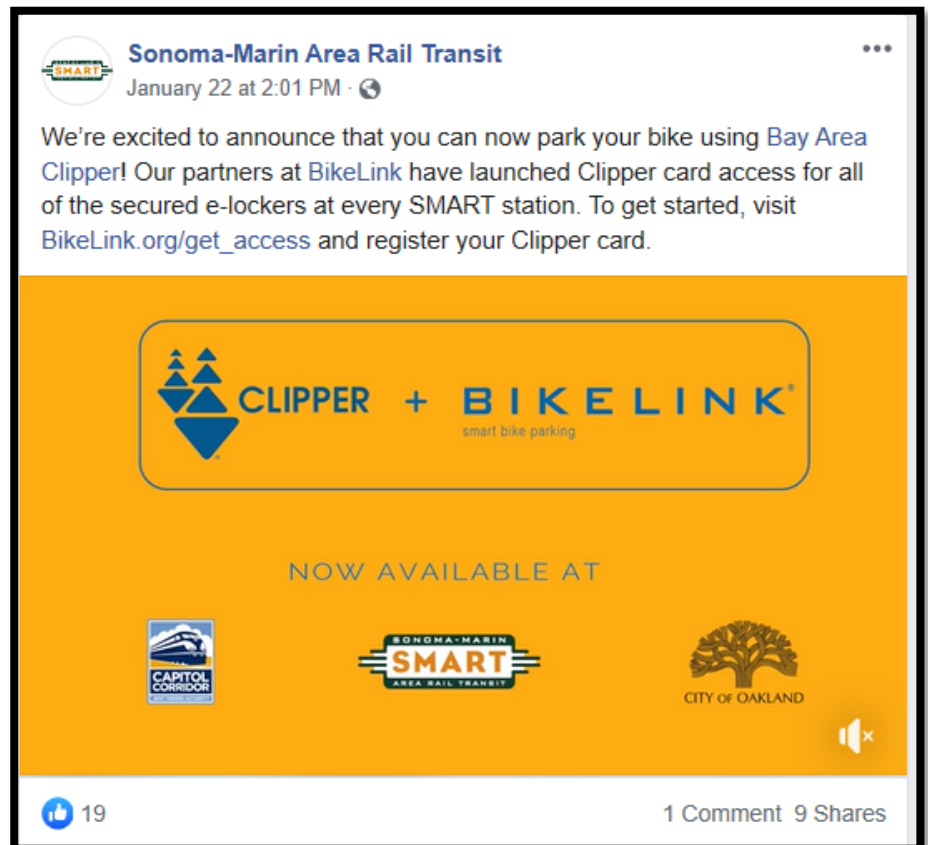
REGIONAL AND LOCAL PLANNING ACTIVITIES

Faster Bay Area Technical Advisory Group: The FASTER Bay Area Steering Committee, comprised of staff from the Bay Area Council, the Silicon Valley Manufacturing Group, and SPUR, have established a Technical Advisory Group comprised of each County Transportation Agency, each of the Bay Area’s transit operators, and regional bodies such as the Metropolitan Transportation Commission, to provide feedback on the FASTER Bay Area proposed voter initiative in support of significant regional transit investments. The FASTER initiative is intended to “make the Bay Area’s transportation system seamless, faster, reliable and predictable.” According to the FASTER Steering Committee, these investments will “help provide more affordable transportation options, reduce climate pollution and improve access to jobs and economic opportunity for low- and middle-income residents.” SMART is participating in the FASTER Technical Advisory Group which continues to meet one time per month in 2020, including the most recent meeting on January 28.

Local Planning Department Notification and Coordination Tracking SMART Planning Staff also tracks and reviews all notices sent by local jurisdictions for projects occurring adjacent to or nearby the railroad tracks. In 2019 staff received and reviewed 171 different notices, with 13 different notices to date in 2020.

SYSTEM ACCESS PLANNING ACTIVITIES

BikeLink™ Lockers – BikeLink officially launched Clipper Card integrations with their lockers at SMART, Capitol Corridor and in the City of Oakland. Users will now be able to use their Clipper Cards to utilize the electronic bike lockers located at all SMART stations, instead of using the separate BikeLink card.



Bike Share - The Sonoma County Transportation Authority (SCTA) and Transportation Authority of Marin (TAM) successfully submitted a joint application to the Metropolitan Transportation Commission (MTC) to receive a grant to create a bike share system in close proximity to the SMART stations. After receiving multiple RFP responses and interviewing the top three ranked firms, SCTA & TAM entered into negotiations with the top selected vendor. The Bicycle Technical Advisory Committee (TAC), which is comprised of representatives from each jurisdiction along the SMART line, met in the SMART offices on Thursday January 30th to review the draft program schedule and discuss the local approval processes. SMART will continue to work with SCTA, TAM and the TAC on the Bike Share program as it is implemented.

Transit Coordination Meetings:

- January 8, 2020 - Staff attended the Metropolitan Transportation Commission (MTC) monthly Transit Finance Working group meeting.
- January 8 & 22, 2020 – Sonoma County Transportation Authority’s Transit Technical Advisory Committee meeting, with the second meeting called to discuss Measure M reauthorization program proposals.

GRANT ACTIVITIES

Affordable Housing Sustainable Communities: The State of California has created the Affordable Housing Sustainable Communities (AHSC) Program with the fifth cycle of programming underway for \$550 million available statewide, with applications due February 11, 2020.

SMART has been solicited for partnerships with two applicants from Santa Rosa, the first associated with the Roseland Village project to construct 75 affordable housing units and the joint application approved by the SMART Board on January 8, 2020. The second AHSC fifth cycle partnership is under consideration by the SMART Board on February 5 and would support the Santa Rosa Junior College (SRJC) campus student housing project for 364 student housing unit. For the former application, if successful, SMART and the City of Santa Rosa would receive resources to complete the SMART Pathway from Joe Rodota Trail across 3rd Street, connecting to the Downtown Santa Rosa Station. SMART would also receive necessary funding towards the completion of the Windsor extension project. For the second application, if successful, the City of Santa Rosa would receive funding towards the completion of the pedestrian overcrossing of Highway 101 between the SRJC and the Santa Rosa North SMART Station area. In addition, if successful, the SRJC would expand their SMART Eco Pass program to include a monthly pass for each resident of the new housing for 3 years. SMART would also receive resources to expand the training partnership with the SRJC’s newly created Diesel Mechanic and Signal Technician certification programs by funding several one-year apprenticeships at SMART.

Transit and Intercity Rail Capital Program: The State of California issued a Call for Projects in October 2019 for applications for the California State Transportation Agency (CalSTA) Transit and Intercity Rail Capital Program (TIRCP). This 2020 TIRCP grant cycle will program projects starting with the 2020-21 fiscal year and ending with the 2024-25 fiscal year and will add \$450-500 million of new money into the program from Senate Bill 1 and Greenhouse Gas Reduction Funds. SMART submitted a request for \$20.9 million of TIRCP funds for the Russian River Bridge Rehabilitation and Healdsburg Station project. Applications were due January 16, 2020, and awards will be announced April 2020.

